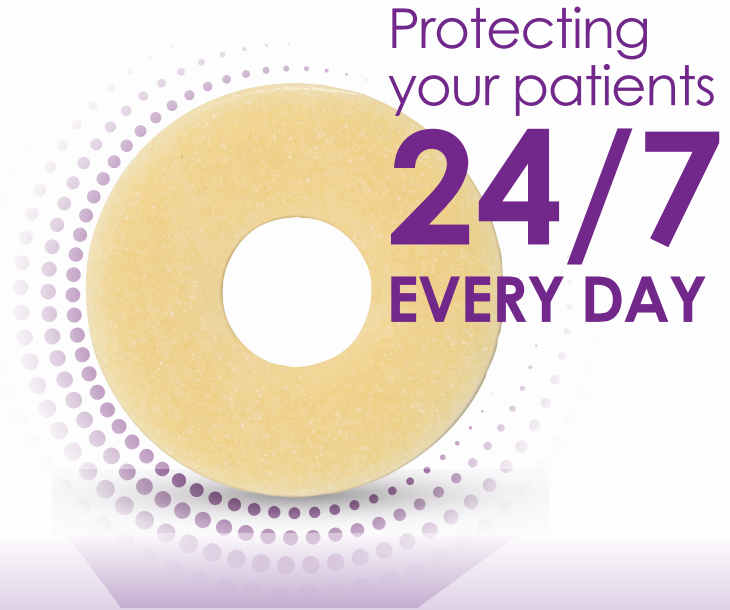


eakin **Cohesive**[®] seals

A **small change** has
a **powerful impact**,
for **every patient**



#SmallButPowerful Case Studies

The addition of an eakin **Cohesive**[®] seal is a small change for ostomates but can have a big impact on their daily lives. eakin **Cohesive**[®] seals are designed to:



Prevent leaks



Protect skin



Absorb up to 4x more than others¹



Give back confidence to ostomates



eakin **Cohesive**[®] seals work hard for your patients every day.
Just like you.

Hear what some of our customers say

Scan here to
listen to our
stories



I was probably about a year into my journey when I was introduced to the **eakin Cohesive**[®] seals and *they've been amazing*. They stretch they don't lose how sticky they are, they fill gaps.

For me it's *not just a little bit of a change* it has been a *life change*.

Robyn, UK

My stoma nurse, she was brilliant, decided for me to use the **eakin Cohesive**[®] seal and *I love it*.

I've tried a couple of others, but they do affect my skin I react against them but with the eakin one I don't. As soon as I put it on *I feel secure* with it on under the pouch.

Clare, UK



My stoma itself protruded quite a bit but also during the day it would shrink and grow so essentially the seal coped with that. It meant I didn't have to be quite so accurate cutting the bag because of course there was a nice overlap on the seal. It really meant that I *wasn't constantly worrying about my stoma leaking*.

Ian, UK

Keep reading for nurse case studies that show how eakin **Cohesive**[®] seals make a difference every day.

#SmallButPowerful

eakin **Cohesive**[®] Seals for building confidence

Background

- Very active man with a young family.
- Unplanned emergency surgery.
- No independence - wife caring for his stoma.
- Feeling restricted in movement.

Problems Experienced

- Pouch leaking around the stoma causing trapped moisture.
- Peristomal skin is excoriated, causing pain and discomfort.
- Loss of confidence and anxiety about the future.
- Using a flat bag and having to reinforce it with regular sticky tape several times for adhesion.

Nurse Advice

To use an eakin **Cohesive** SLIMS[®] seal under a soft convex pouch with a small amount of eakin **Cohesive**[®] paste to create a smooth surface.

Advised to change pouch every 2 days even if no leakage in order to inspect, cleanse and ensure the sore skin was healing.

Day 1



1 Week



Solution with eakin **Cohesive**[®] seals

Within 1 week of use

- The skin had greatly improved and pain had eased.
- No burning sensation or leaks.
- Increased pouch wear-time.

Less than 1 month after initial consultation

Skin: No pain, discomfort or excoriated skin.

Stoma Management: He is now fully independent and is confident he can manage his stoma.

Bigger Life: Confidence has been rebuilt - the stress and worry about the future is not a concern. He has resumed normal day to day activities and an active lifestyle.

*"It's very clear that the small addition of an eakin **Cohesive**[®] seal can make an amazing improvement in day-to-day life."*

1 Month



Case study submitted by:
Louise Lyons, Community Stoma Nurse, Ireland

#SmallButPowerful

eakin **Cohesive**[®] stomawrap for large stomas and poor visibility

Background

- 73 year old lady who was very active and enjoyed walking.
- 2011: Spinal stroke leading to faecal and urinary incontinence.
- 2018: Formation of a loop ileostomy.

Problems Experienced

- Challenging stoma - on the right, granuloma on the mucosa and on the left tilted and protruding.
- Poor visibility of the stoma.
- Peristomal skin damage due to constant leaks.
- Insomnia due to ongoing abdominal pain including at stoma site.
- Continuous baseplate changes - 5x a week.
- Her current 2-piece system was hard, bulky and uncomfortable.

Nurse Advice

Initially switched to a different 2-piece then 1-piece system but neither worked. **Leaks continued with sore red peristomal skin.**

With support from **eakin**[®], the eakin **dot**[®] 2-piece system with an eakin **Cohesive**[®] stomawrap was introduced. The seal was chosen for it's unique cut out and oval shape allowing for easy application - wrapping around the stoma to create a secure seal.



Solution with eakin **Cohesive**[®] stomawrap

New regular routine

- Seal prevented leaks from occurring meaning the 5x weekly baseplate changes were reduced by half.
- Changes are quicker, only taking 15 minutes.
- Independence has been restored and the lady can confidently change the pouch herself.

Skin: Peristomal skin has improved substantially, leaks no longer occur.

Stoma Management: With adjustments of the baseplate template and introduction of the seal, a good routine has been established.

Bigger Life: Confidence has been rebuilt - after a long struggle, peace of mind has returned and the lady is happy with her stoma care.



Case study submitted by:
Marjon Valk,
Stoma and Continence Nurse, Bernhoven Hospital, Uden

#SmallButPowerful

eakin **Cohesive**[®] stomawrap with bulky, prolapsed stomas

Background

- 72 year old gentleman.
- February 2018: Colorectal Cancer resulting in bowel resection with large loop ileostomy.
- July 2020: Cancer progressed and gentleman referred to palliative care.

Problems Experienced

- Both limbs of loop ileostomy prolapsed which made it difficult to view the peristomal skin to apply a seal and pouch.

Nurse Advice

Due to the impaired view of the loop ileostomy, an eakin **Cohesive**[®] stomawrap was suggested to facilitate easier application. The gentleman was previously using an eakin **Cohesive**[®] small to protect peristomal skin.

Due to the prolapsed stoma, the aperture of the pouch was cut slightly larger for easier application - leaving gaps between the baseplate and stoma. The eakin **Cohesive**[®] stomawrap filled these gaps, fitting securely under the baseplate.



Solution with eakin **Cohesive**[®] stomawrap

Skin: No leaks occurred and skin condition remained excellent.

Stoma Management: Using the eakin **Cohesive**[®] stomawrap allowed the gentleman to easily attach the two ends of the product above his stoma, creating a **secure fit by touch alone**.

Bigger Life: Independence in stoma management initially meant no reliance on others for assistance and continuation of his normal routine.

Ongoing care

- As the gentleman's condition deteriorated he relied on a carer for support and assistance with his stoma care.
- The carer had minimal stoma care experience, however found the application of eakin **Cohesive**[®] stomawrap simple.
- Skin health remained excellent.



For visual purposes, eakin **Cohesive**[®] Stomawrap loosely applied to show join



Case study submitted by:
Kate Slattery
Community Stoma Care Nurse, Ireland

#SmallButPowerful

eakin **Cohesive**[®] stomawrap with hernias and larger stomas

Background

- 76 year old gentleman.
- 2014: End ileostomy formed due to Colorectal Cancer.

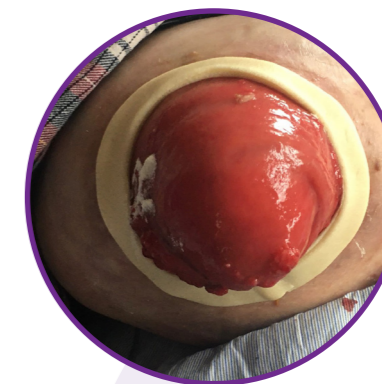
Problems Experienced

- Developed large parastomal hernia however deemed unsuitable for surgical repair due to multiple co-morbidities.
- Stoma prolapsed and measured 80mm.
- Experiencing regular pouch leakages.
- Trial of 1 piece Easifold Maxi which facilitated 80mm aperture and a regular seal. Seals thinned when stretched to 80mm.

Nurse Advice

eakin **Cohesive**[®] stomawrap was recommended due to it's unique shape however a single seal thinned when stretched.

Secure seal achieved by using use 2 x eakin **Cohesive**[®] stomawrap seals, placing one on top of each other, and stretching to 80mm allows for the seal to fully stretch around the stoma with no thinness.



Solution with eakin **Cohesive**[®] stomawrap

Solution has been used for a year and has resulted in great seal security and skin protection.

Skin: Rarely experiences a leak meaning peristomal skin remains healthy.

Stoma Management: Confident in applying the eakin **Cohesive**[®] stomawrap doubled up to protect his peristomal skin.

Bigger Life: Average wear time with the seal is 3 days allowing the gentleman to get on with life without worrying about leaks.

Case study submitted by:
Kate Slattery
Community Stoma Care Nurse, Ireland

#SmallButPowerful

eakin **Cohesive**[®] large for sensitive damaged peristomal skin

Background

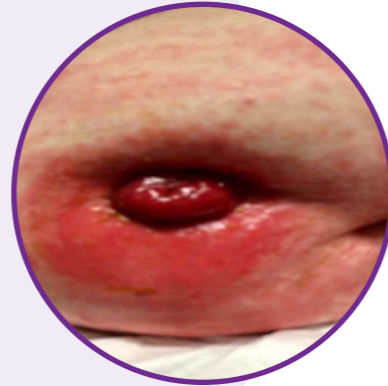
- 44 year old, obese gentleman.
- PMH Intellectually impaired.
- Diagnosis of IBD – severe colitis, unsuccessfully medically managed, resulting in Total Colectomy.
- End ileostomy formed.

Problems Experienced

- Abdomen was tight and distended meaning the stoma was under skin folds.
- Sensitive skin with a number of allergies including to adhesive dressings.
- Leaks, contact dermatitis and unskilled carers resulted in severely eroded peristomal skin.

Nurse Advice

The eroded skin extended to the outer edge of the pouch baseplate and therefore a larger area of peristomal skin required protection. eakin **Cohesive**[®] large seal was introduced due to size and skin friendly properties.



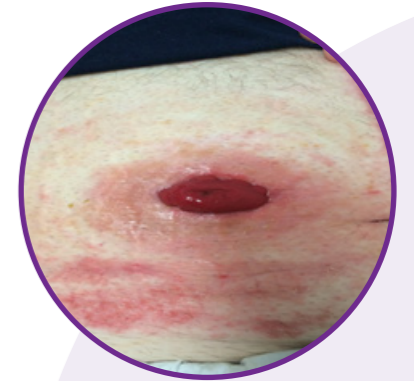
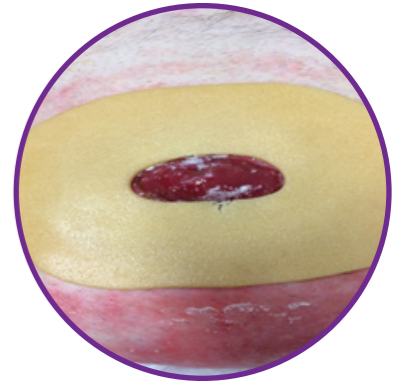
Solution with eakin **Cohesive**[®] large

Skin: Contact dermatitis is resolving with the large seal coming into direct contact with the peristomal skin.

Stoma Management: Both the gentleman and carers have been upskilled in stoma management and the issues experienced have been resolved.

Bigger Life: Gentleman commented:

“I feel so much happier now that I do not have sore skin and leaks and I can go back to my painting classes without worrying that I am going to make a mess everywhere and smell terrible.”



Case study submitted by:
Sheryl Waye
Clinical Nurse Consultant, Gold Coast University Hospital, Australia

#SmallButPowerful

An eakin® seal for every situation

eakin
freeseal®



eakin **Cohesive**
SLIMS®

Your Leak Preventer

For stomas under 50mm for ongoing protection

REF

839005

Depth: **2.8mm**
Width: **48mm**



eakin **Cohesive**®
small

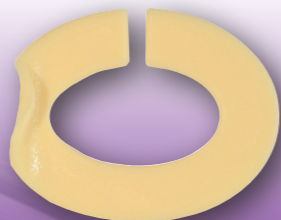
Your Extra Protector

For stomas under 50mm with frequent loose output / urine

REF

839002

Depth: **4.2mm**
Width: **48mm**



eakin **Cohesive**®
StomaWrap

Your Time Saver

For larger or irregular shaped stomas over 50mm

REF

839006

Depth: **3.0mm**
Width: **85mm**



eakin **Cohesive**®
large

Greatest Coverage

To smooth uneven skin surfaces or for a larger skin area

REF

839001

Depth: **2.1mm**
Width: **98mm**



eakin freeseal®

Your seal for convex

Only 1.8mm for convex drainable pouch users

REF

839007

Depth: **1.8mm**
Width: **48mm**

Plus **NEW eakin freeseal**® the first seal designed for convex drainable pouches.

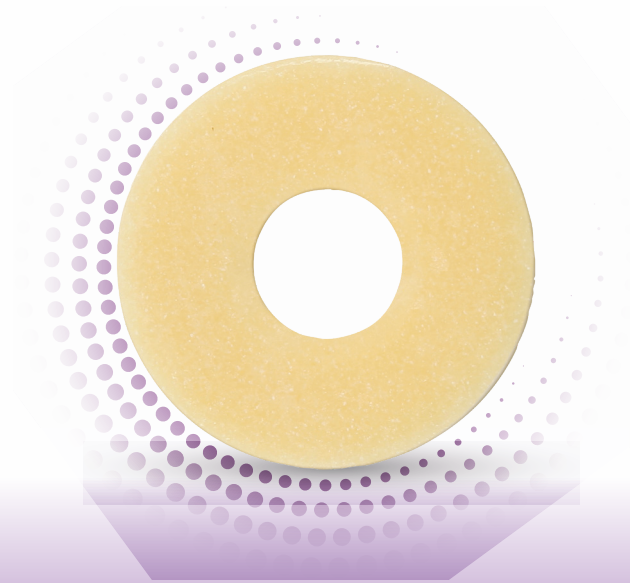
Typically, where convexity is required, a thicker seal can impact on effective stoma protrusion.

At just **1.8mm thin**, **eakin freeseal**® solves this problem giving you the freedom to use a seal with a **convex drainable pouch**.



Scan here to find out more on **eakin freeseal**®





**Make a #SmallButPowerful change
Make eakin Cohesive® seals your first choice, every day**

References

1. Mc Grogan G, Haughey S and McDowell K (2018) An absorbent, enzyme-inhibiting seal reduces peristomal skin complications. *Gastrointestinal Nursing* 16:1 42-4